

HOW TO SETUP COVID-19 TEST KIT MANUFACTURING UNIT?

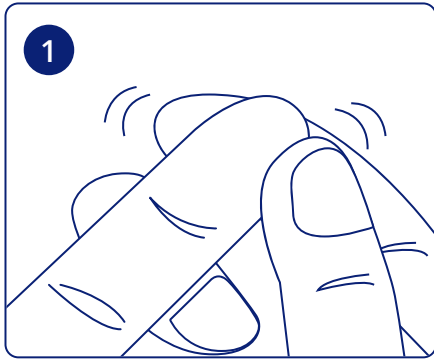
BALLYA, a manufacturer of antigen test kit, we provide raw materials, semi product, equipment, automatic production line to help who want to manufacture Antigen Test Kit. We have full professional solutions from antigen and antibody to finish product, include fully techniques for manufacturing to transfer.

Three plans for help you setup your own *Antigen Test Kit* manufacturing unit.

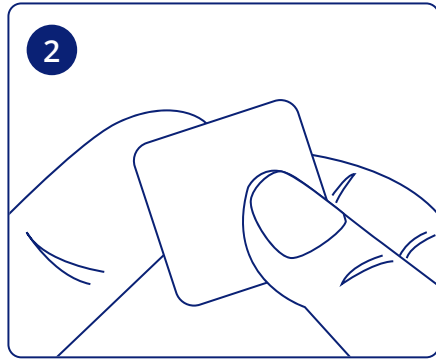
| Solution | PLAN A <i>Basic</i> | PLAN B <i>Standard</i> | PLAN C <i>Premium</i> |
|-----------------------|---|--|---|
| Raw Materials | Uncut Sheet: Antigen Test Kit or Neutralizing antibody Test Kit | Conjugated antibody; Conjugated antigen; Antigen Test Kit or Neutralizing antibody Test Kit | SARS-Cov-2 antigen; SARS-Cov-2 antibody; IgG antibody; IgM antibody; Chicken IgY antibody; Goat anti-Chicken IgY antibody; Antigen Test Kit or Neutralizing antibody Test Kit or IgG & IgM Rapid Test Kit |
| Production Difficulty | Easy | Medium | High |
| Accessories | Antigen Test Kit: Buffer solution; Extraction tube; Lateral flow cassette; Foil bag; Neutralizing Antibody Test Kit: Buffer solution; Lateral flow cassette; Foil bag; Lancet ; Alcohol pad; Disposable pipette; | Antigen Test Kit: Lateral flow cassette; Lateral flow backing card; Conjugate pad; Sample pad; Absorbent pad; Nitrocellulose membrane; Foil bag; Extraction tube; Neutralizing Antibody Test Kit: Lateral flow backing card; Conjugate pad; Sample pad; Absorbent pad; Nitrocellulose membrane; Lateral flow cassette; Foil bag; | Antigen Test Kit: Gold nanoparticles; Extraction tube; Lateral flow cassette; Foil bag; Lateral flow backing card; Conjugate pad; Sample pad; Absorbent pad; Nitrocellulose membrane; Neutralizing Antibody Test Kit: Gold nanoparticles; Lateral flow backing card; Conjugate pad; Sample pad; Absorbent pad; Nitrocellulose membrane; |

| Solution | PLAN A <i>Basic</i> | PLAN B <i>Standard</i> | PLAN C <i>Premium</i> |
|--|---|--|---|
| Accessories | | Lancet ; Alcohol pad; Disposable pipette; | Lateral flow cassette; Foil bag; Lancet; Alcohol pad; Disposable pipette; |
| R&D team requirement | Basic | Medium skilled | High skilled and rich experience |
| Small scale production Basic equipment | Lateral flow strip cutter; Lateral flow cassette presser; Seal and print machine; | Lateral flow dispenser; Lateral flow strip cutter; Lateral flow cassette presser; Seal and print machine; Blast Drying Oven; Mixer; Etc, | Lateral flow dispenser; Lateral flow strip cutter; Lateral flow cassette presser; Seal and print machine; Blast Drying Oven; Mixer; Stainless Steel Tank; Centrifuge; Micropipette; Etc, |
| Large scale production Automatic production | Semi automated rapid test assembly machine | Fully automated rapid test assembly machine | |
| Technology transfer | Basic | Medium | Full |
| Lateral flow training | Basic | Custom | Custom |
| Contract assay development | Custom | Custom | Custom |
| Contract manufacturing | Custom | Custom | Custom |

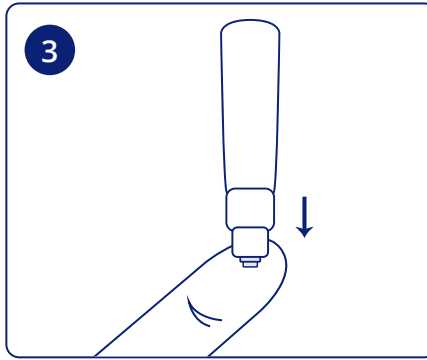
Operation: IgG/IgM Rapid Test Kit



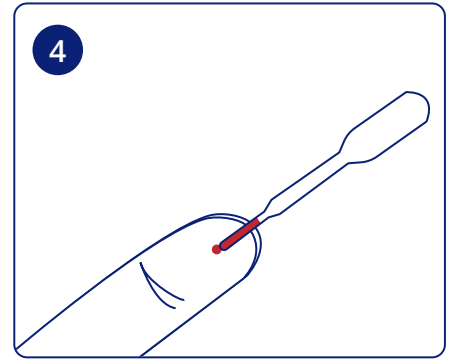
1 Gently rub the finger to make it slightly congested.



2 Use alcohol cotton to wipe the blood sampling site and dry naturally.



3 Remove the lid of the blood sampling needle, and press its head.



4 Take about 20µL of blood with a dropper.

※ Note that the error results may occur if placed for more than 20 minutes.

5 **Confirmation of the results**

| Not Detected | Detected | Detected | Detected |
|--------------------------------------|--------------------------------------|--------------------------------------|--------------------------------------|
| <p>C [+] IgG [-] IgM [-]</p> | <p>C [+] IgG [+] IgM [-]</p> | <p>C [+] IgG [-] IgM [+]</p> | <p>C [+] IgG [+] IgM [+]</p> |
| [C + G - M -] | [C + G + M -] | [C + G - M +] | [C + G + M +] |
| Negative | IgM Negative IgG Positive | IgM Positive IgG Negative | IgM Positive IgG Positive |



① Lancet

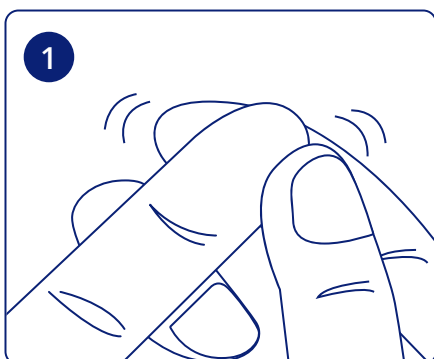
② Disposable plastic straw

③ Diluent

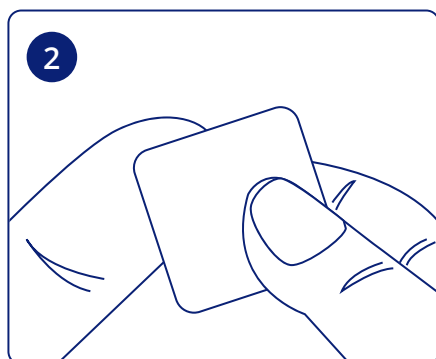
④ Test pad

⑤ Manual

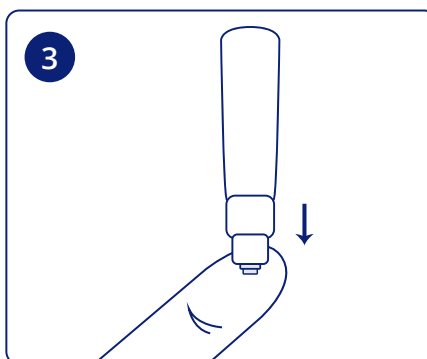
Neutralizing Antibody Test Kit



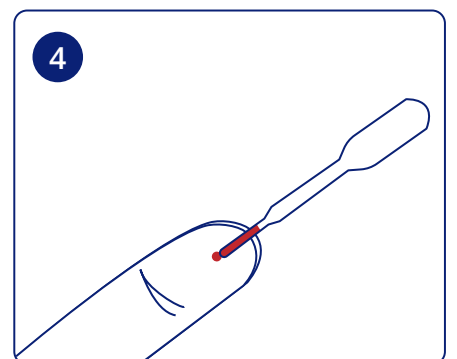
1 Gently rub the finger to make it slightly congested.



2 Use alcohol cotton to wipe the blood sampling site and dry naturally.



3 Remove the lid of the blood sampling needle, and press its head.



4 Take about 20µL of blood with a dropper.

※ Note that the error results may occur if placed for more than 20 minutes.

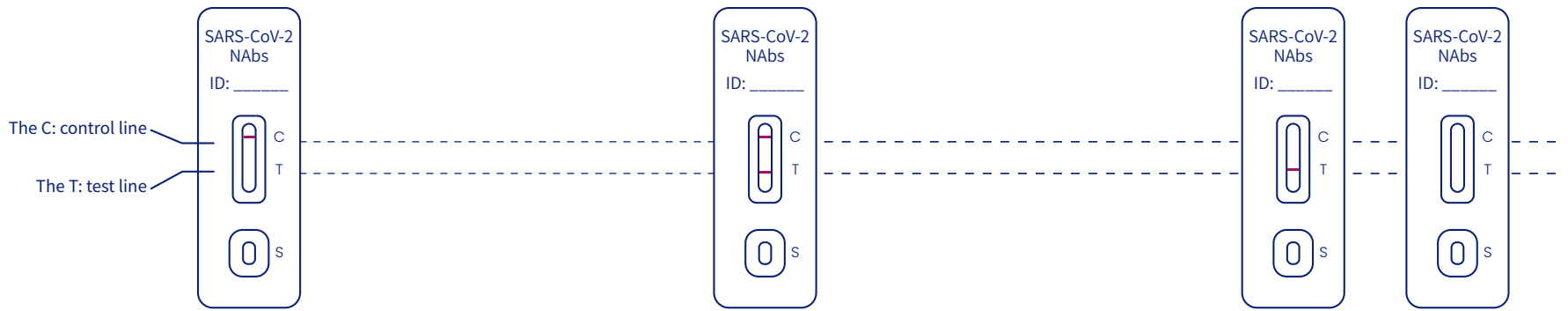
5

Confirmation of the results

Not Detected

Detected

Invalid test result



① Lancet

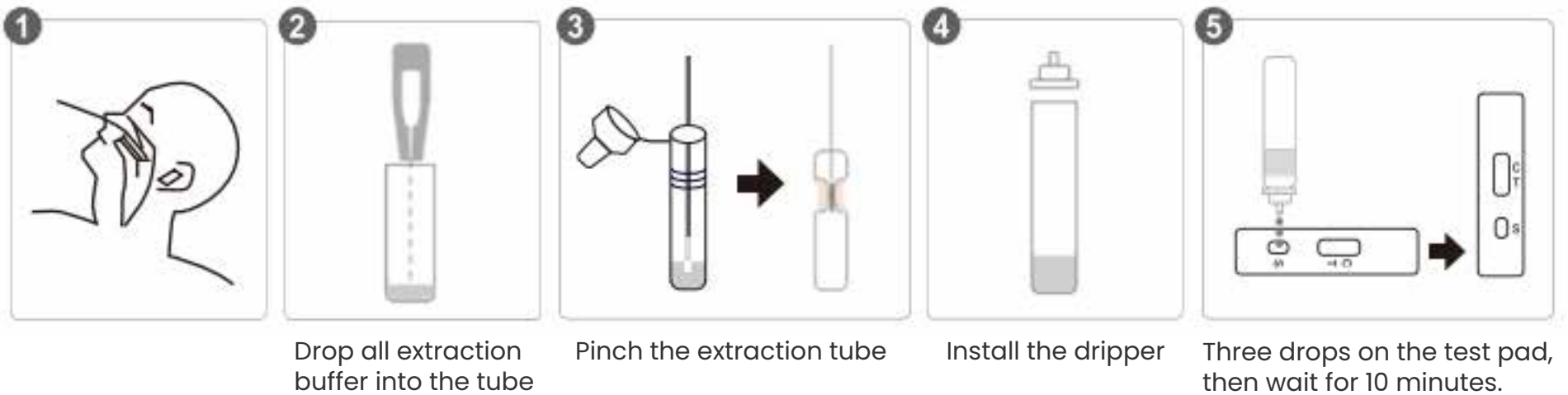
② Disposable plastic straw

③ Diluent

④ Test pad

⑤ Manual

Antigen Test Kit (Professional)



※ Note that the error results may occur if placed for more than 20 minutes.

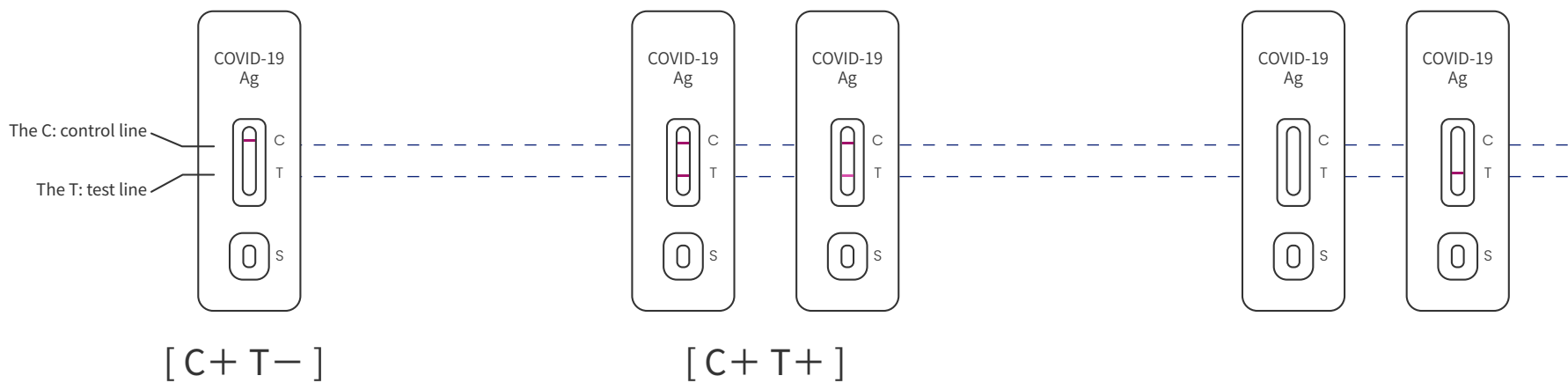
6

Confirmation of the results

Not Detected

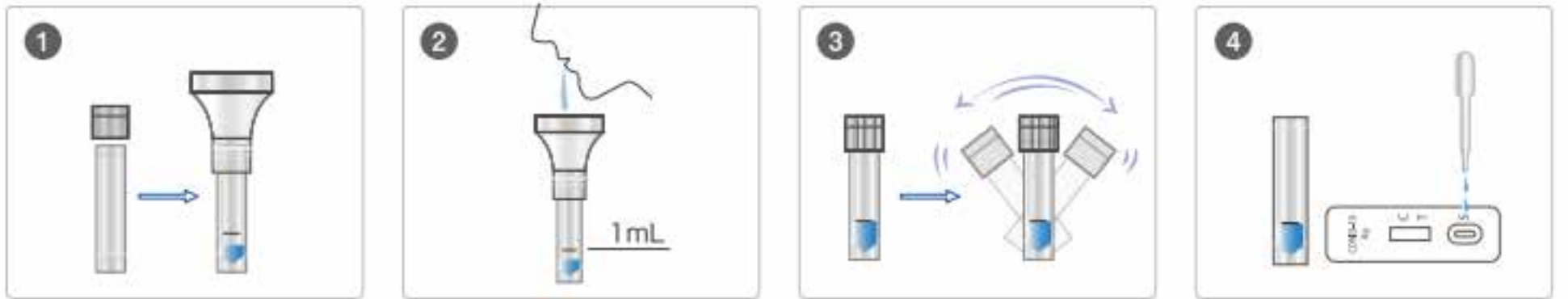
Detected

Invalid test result





Antigen Test Kit (Saliva)



1. Open the lid of the saliva diluent container and fit the funnel.

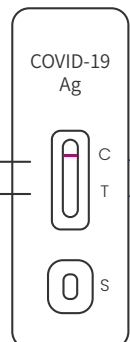
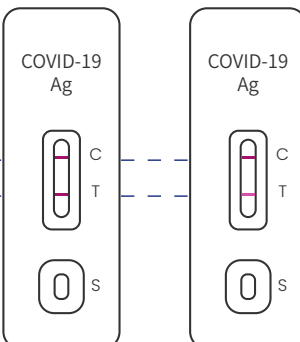
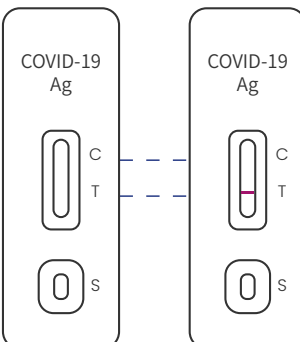
2. Spit out saliva to the 1ml line and remove the funnel.

3. Cover it, and shake the container.

4. Open the lid, add 3 drops on the test pad, then wait for 10 minutes.

※ Note that the error results may occur if placed for more than 20 minutes.

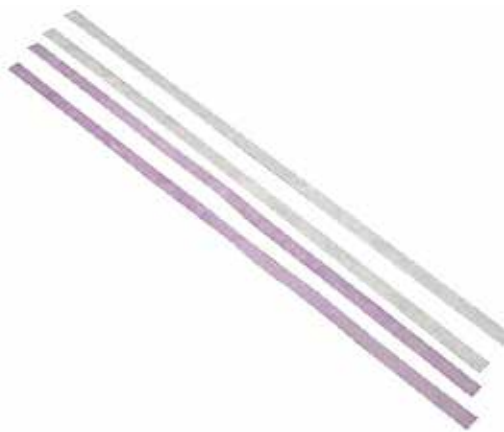
5 Confirmation of the results

| Not Detected | Detected | Invalid test result |
|--|---|---|
|  <p style="text-align: center;">[C+ T-]</p> |  <p style="text-align: center;">[C+ T+]</p> |  |



BALLYA

Raw materials & Accessories:



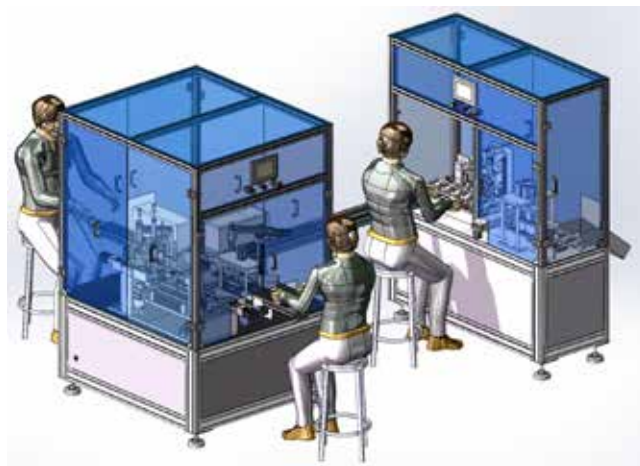
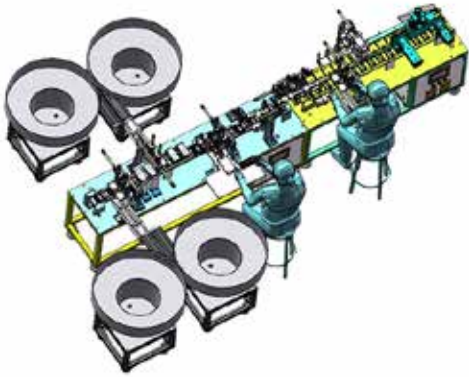
Equipment for lateral flow assay development & manufacturing:



BALLYA



Facilities for lateral flow automated manufacturing:



Contact Us

Address: 5F, Building B, No.241, ShangYe Rd., Huadu, Gunangzhou, China

Tel: +86 20 3947 9163

WhatsApp/WeChat: +86 13922297756

E-mail: info@ballyabio.com